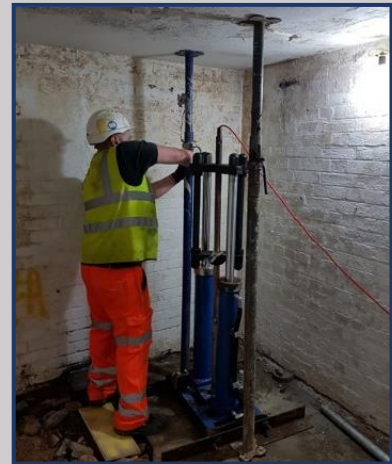


CPT BASEMENT RAMS (CPT023)

CPT 023 is a set of hand portable CPT rams ideal for testing in warehouses, basements and areas where space is confined and access is restricted. The rams have their own electric, hydraulic power pack which is also hand portable. These rams can be used to complete two to four locations in a day because they need bolting to the floor in order to produce the required reaction force for testing.

CPT RIG DETAILS

DRIVE SYSTEM	HAND PORTABLE
TOTAL WEIGHT	30KG
CPT RAM THRUST CAPACITY	10 TONNES
MAXIMUM PENETRATION	10-20M
PERFORMANCE RATES	2-4 LOCATIONS A DAY
TYPICAL SITES FOR THIS RIG	BASEMENTS, WAREHOUSES, AREAS WITH RESTRICTED ACCESS



CPT RIG DIMENSIONS

