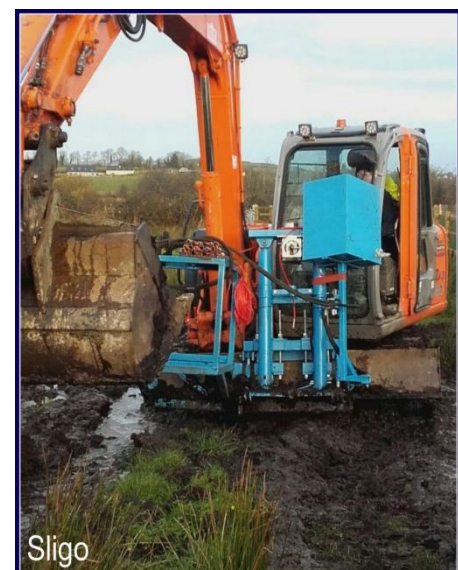


8.5 TONNE MOBILE RAMS (CPT013)

These detachable mobile rams have been designed and built specifically to accommodate harsh, difficult sites such as peat bogs and floodplains. The rams are attached to a medium sized excavator which provides us with both the reaction force needed and the hydraulic power to test efficiently to produce quality data for our clients. Furthermore, this enables us to travel quickly between tests and work to our full potential. This set of rams and excavator are based in central Ireland and can save our client on mobilisation costs.

CPT RIG DETAILS

DRIVE SYSTEM:	TRACKED
TOTAL WEIGHT:	8.5 TONNES
GROUND BEARING PRESSURE:	30KPA
CPT RAM THRUST CAPACITY:	20 TONNES
MAXIMUM PENETRATION:	20-30M DEPENDING ON THE GROUND CONDITIONS.
PERFORMANCE RATES:	100-150m OF TESTING A DAY, DEPENDING ON ACCESS TO POSITIONS.
TYPICAL SITES FOR THIS RIG:	SOFT, BOGGY SITES, E.G. PEAT BOGS AND FLOODPLAINS.



CPT RIG DIMENSIONS (MM)

